

# Enhanced Performance Management for IP Voice, Video & Data

**SQmediator**® is an advanced performance management system for IP networks that monitors, tests and troubleshoots the performance of a range of services including VoIP, Videoconferencing, IPTV, Video Streaming and Data.

**Monitor Voice/Video Quality in Real Time** — monitors up to millions of concurrent voice calls and video sessions, providing accurate QoE (MOS) scores and detailed performance metrics for every call/session.

**Proactively Identify Problems** — SQmediator immediately highlights quality impairments on its web UI dashboard and generates email alerts and SNMP traps if service performance thresholds are exceeded.

**Quick Access to Data** — click to view detailed call diagnostics or a custom dashboard for a customer or location. SQmediator's interactive charts allow users to quickly drill down into crucial data without hunting through complicated menus.

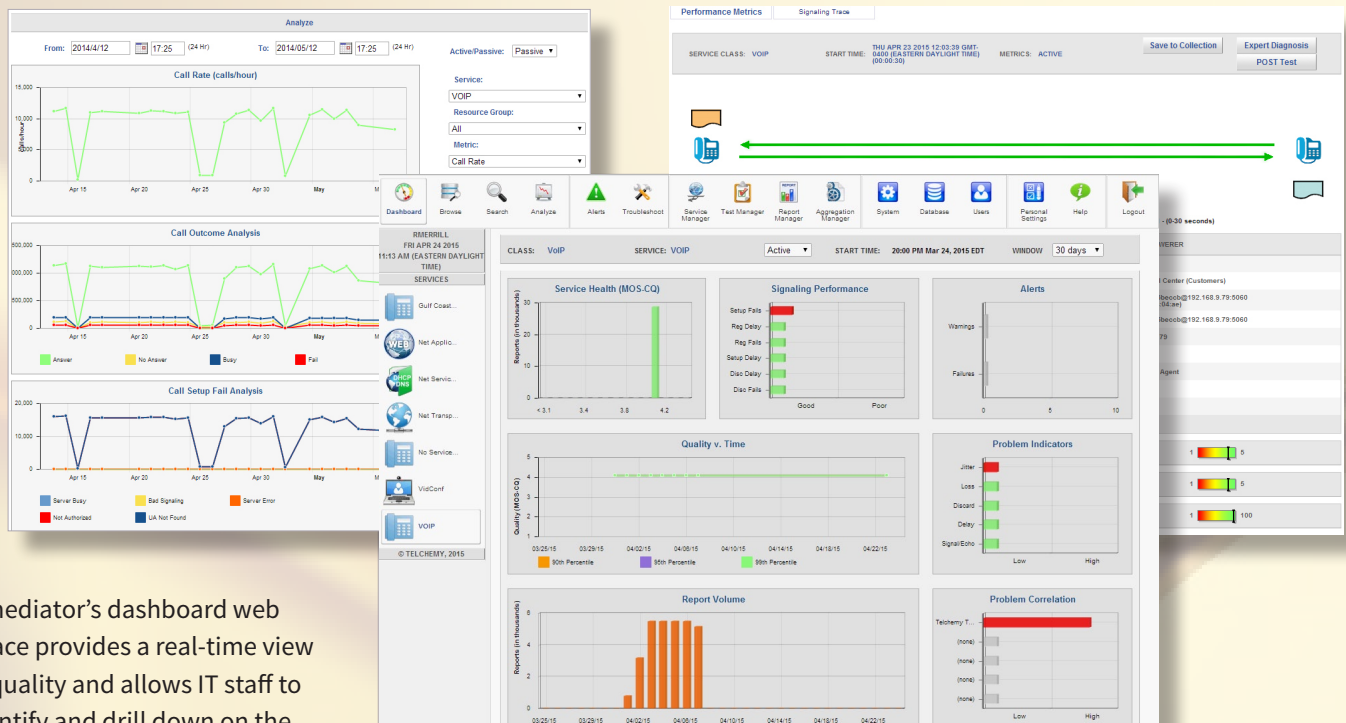
**Manage Thousands of Customers and Sites** — up to 15,000 configurable aggregation groups with up to 10 levels of hierarchy. Easily restrict users to specific resources to keep private data secure.

## KEY FEATURES

- Supports both passive monitoring and active testing
- Carrier grade performance - manage up to millions of end users
- Multitenant architecture - manage thousands of customers/sites using a single system with one database
- Intuitive, web browser based UI with real-time interactive charts
- Custom dashboards for any customer, location, etc.
- Highly configurable internal/external service metric thresholds
- Real-time trouble notification via email alerts and SNMP traps

## KEY BENEFITS

- Tracks user/subscriber QoE for every voice call/video session
- Proactively identifies and diagnoses problems
- Fast response time - immediately reports service impairments on the dashboard and via alerts
- User-friendly interface, easy to navigate - no steep learning curve
- Correlates incoming performance data in real time — no long processing delay
- Tailored product editions for Small/Medium Business, Enterprise, Small/Large Service Provider applications



**Right:** SQmediator's dashboard web user interface provides a real-time view of service quality and allows IT staff to quickly identify and drill down on the root cause of performance problems.

# SQmediator® — Next Generation Performance Management

**Real-Time Quality Monitoring** — provides a real-time view of IP voice and video performance by collecting and analyzing quality reports from passive probes, VoIP and videoconferencing phones, IPTV set-top boxes, and other reporting devices.

**Sophisticated Testing & Problem Diagnosis** — actively tests and troubleshoots VoIP, IP Video, Web, Email and Data performance using powerful software test agents that can run on Linux/Windows VMs or standard hardware anywhere in the network.

**Enhanced Search** — powerful, fast search engine lets users quickly find and retrieve quality records using a wide range of search filters. Now supports URI substring matching— filter on a phone prefix, suffix, or both, using numeric or text-format URIs.

**Flexible Integration with Other Applications** — multi-purpose “Flex Button” provides UI integration with third-party systems. Configure it to open a trouble ticket, request a packet capture or other tasks, with a single click from any call or test record.

**Robust and Secure** — SQmediator is designed to meet stringent US DoD security requirements and has been thoroughly tested against a wide range of security attacks and exploits including SQL/XSS injection and brute force password attacks.

**Affordably Priced** — SQmediator offers competitive pricing and a straightforward licensing model.

## The SQmediator® Performance Advantage

SQmediator®	Typical Network Management Systems
Collects real-time quality metrics and diagnostic data directly from probes and media endpoints	Must poll devices periodically using SNMP
Provides immediate notification of problems	May not detect/report problems for many minutes, depending on polling interval
Actively tests VoIP, Video, Web, Email and Data using compact, installable software test agents	No active test support, or requires expensive hardware probes to run tests
Correlates performance data by customer, location, network, device, other criteria	Limited or no support for custom data correlation

### TECHNICAL SPECIFICATIONS

#### Hardware

- Intel dual-core CPU or equivalent (quad-core recommended)
- 4 GB RAM (8-12 recommended)
- 250 GB available storage (1 TB with RAID recommended)
- Minimum of one (1) 10/100/1000 Ethernet interface

#### Operating System

- Red Hat Enterprise Linux / CentOS version 5 or version 6 (32- or 64-bit)
- Sun/Oracle Java SE 6 or higher JRE (installed on Reporter server)

#### Supported Databases

- Oracle 11g Release 1/Release 2
- PostgreSQL version 8.4 or higher

#### User Interface

- Graphical HTML5 browser-based UI
- Multiple browser/version support
- Strong security



#### Telchemy, Incorporated

2905 Premiere Parkway  
Suite 280  
Duluth, GA 30097  
USA

**Email:** [info@telchemy.com](mailto:info@telchemy.com)

**Web:** [www.telchemy.com](http://www.telchemy.com)



Powering connections

Telchemy, SQmediator, and the Telchemy logo are registered trademarks or trademarks of Telchemy, Incorporated. VQmon contains technology described in four or more patents and pending patents.

© 2009-2015 Telchemy, Incorporated, all rights reserved.